

Corporate Information

As of March 31, 2003

Corporate Headquarters Santen Pharmaceutical Co., Ltd.
9-19, Shimoshinjo 3-chome
Higashiyodogawa-ku
Osaka 533-8651, Japan
URL: <http://www.santen.co.jp>
Investor relations contact:
TEL: +81-6-6321-7007
FAX: +81-6-6321-8400
E-mail: ir@santen.co.jp

Established 1890

Paid-in Capital ¥6,214 million

Number of Shareholders 7,873

Stock Exchange Listings Tokyo and Osaka

Ticker Code 4536

Transfer Agent UFJ Trust Bank Limited
6-3, Fushimicho 3-chome, Chuo-ku
Osaka 541-8502, Japan
TEL: +81-6-6229-3011

Major Offices Sapporo, Sendai, Tokyo, Nagoya,
Osaka, Hiroshima and Fukuoka

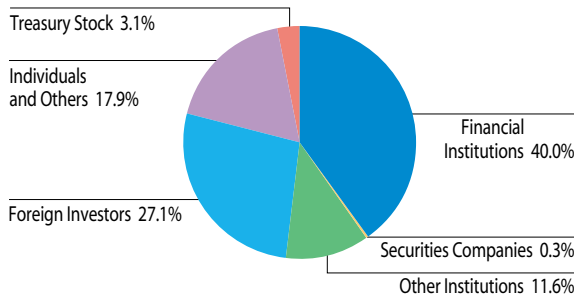
Manufacturing Plants Noto, Shiga and Osaka

Research Laboratory Nara Research and Development Center

Number of Employees 2,500 (non-consolidated: 1,740)

Number of Shares Issued 90,704,303

Distribution of Shareholders by Number of Shares Held

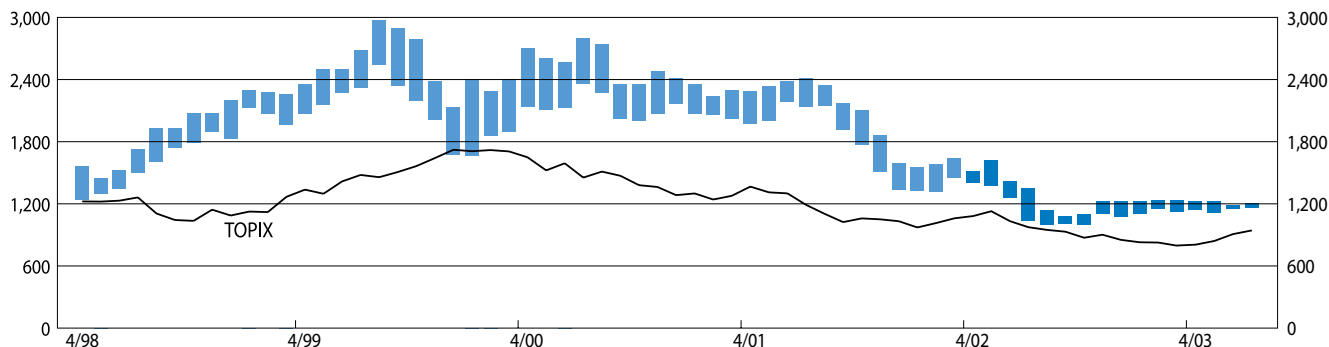


Major Shareholders

Shareholders	Thousands of Shares	Percentage of Total Voting Rights
Northern Trust Company AVFC Sub-account American Clients	10,072	11.5%
Japan Trustee Services Bank, Ltd.	5,902	6.7
Mita Sangyo Co., Ltd.	4,756	5.4
The Master Trust Bank of Japan, Ltd.	4,483	5.1
Nippon Life Insurance Company	4,272	4.9
UFJ Bank Limited	3,221	3.7
UFJ Trust Bank Limited	3,117	3.6
The Bank of Tokyo-Mitsubishi, Ltd.	2,724	3.1
The Tokio Marine and Fire Insurance Co., Ltd.	2,668	3.0
Trust & Custody Services Bank, Ltd.	2,072	2.4

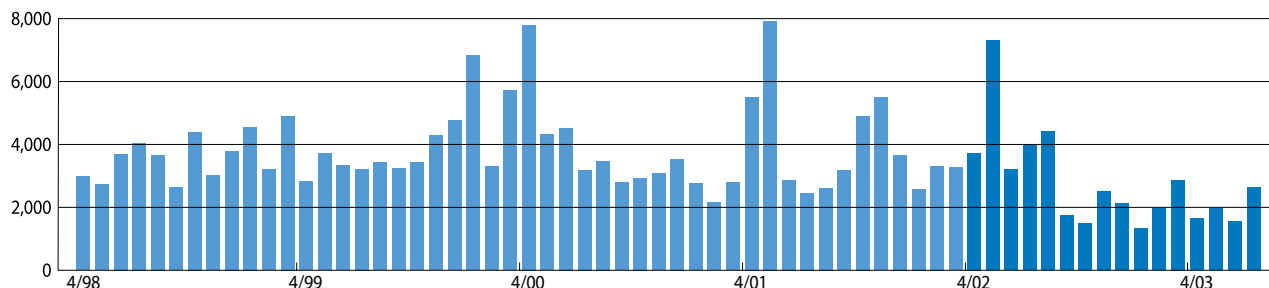
Stock Price Range Osaka Securities Exchange (monthly basis)

(Yen)



Trading Volume Osaka Securities Exchange (monthly basis)

(Thousands of shares)



Yearly High and Low Prices

	1999	2000	2001	2002	2003
High (yen)	2,975	2,800	2,410	1,635	1,228
Low (yen)	1,675	1,659	1,330	990	1,099

* Stock price data shows values after adjustment for share splits.

* TOPIX: Tokyo stock price index

Note: Calendar years. Stock prices for 2003 are for the period to July 31.