

CORPORATE INFORMATION

As of March 31, 2004

Corporate Headquarters Santen Pharmaceutical Co., Ltd.
9-19, Shimoshinjo 3-chome
Higashiyodogawa-ku
Osaka 533-8651, Japan
URL: <http://www.santen.co.jp>
Investor relations contact:
TEL: +81-6-6321-7007
FAX: +81-6-6321-8400
E-mail: ir@santen.co.jp

Established 1890

Paid-in Capital ¥6,214 million

Number of Shareholders 7,862

Stock Exchange Listings Tokyo and Osaka

Ticker Code 4536

Transfer Agent UFJ Trust Bank Limited
6-3, Fushimicho 3-chome,
Chuo-ku Osaka 541-8502, Japan
TEL: +81-6-6229-3011

Major Offices Sendai, Tokyo, Saitama, Nagoya,
Osaka, Hiroshima and Fukuoka

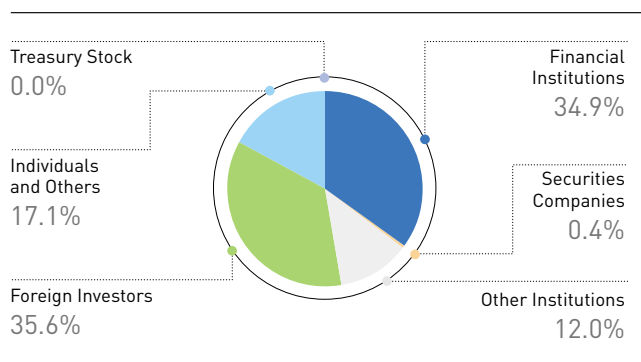
Manufacturing Plants Noto, Shiga and Osaka

Research Laboratory Nara Research and Development
Center

Number of Employees 2,335 (non-consolidated: 1,694)

Number of Shares Issued 87,963,303

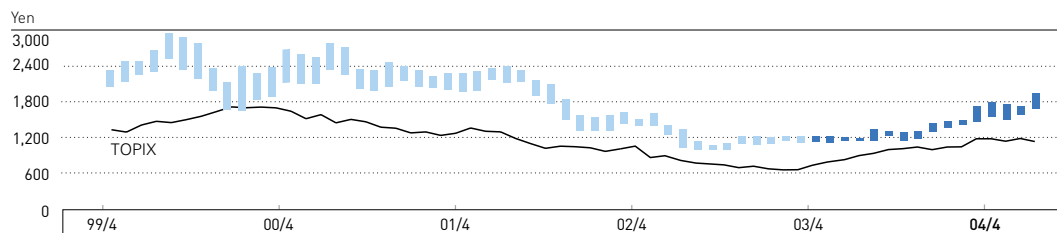
Distribution of Shareholders by Number of Shares Held



Major Shareholders

Shareholders	Thousands of Shares	Percentage of Total Voting Rights
Northern Trust Company		
AVFC Sub-account American Clients	11,746	13.4%
Japan Trustee Service Bank, Ltd.	5,568	6.3
The Master Trust Bank of Japan, Ltd.	4,807	5.5
Mita Sangyo Co., Ltd.	4,756	5.4
Nippon Life Insurance Company	3,051	3.5
The Tokio Marine and Fire Insurance Co., Ltd.	2,668	3.0
UFJ Bank Limited	2,358	2.7
The Bank of Tokyo-Mitsubishi, Ltd.	2,358	2.7
Trust & Custody Services Bank, Ltd.	2,077	2.4
Royal Trust Corp. of Canada Lending Account	1,691	1.9

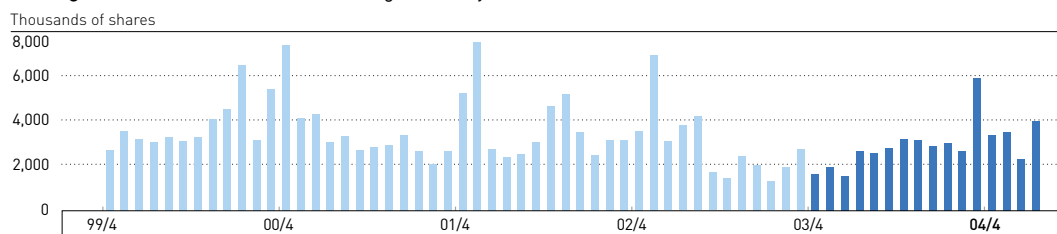
Stock Price Range Osaka Securities Exchange (monthly basis)



* Stock price data shows values after adjustment for share splits.

* TOPIX: Tokyo stock price index

Trading Volume Osaka Securities Exchange (monthly basis)



Yearly High and Low Prices

	2000	2001	2002	2003	2004
High (yen)	2,800	2,410	1,635	1,435	1,943
Low (yen)	1,659	1,330	990	1,099	1,362

Note: Calendar years. Stock prices for 2004 are for the period to the end of July.