

Corporate Information

As of March 31, 2005

Corporate Headquarters Santen Pharmaceutical Co., Ltd.
9-19, Shimoshinjo 3-chome
Higashiyodogawa-ku
Osaka 533-8651, Japan
URL: <http://www.santen.co.jp>
Investor relations contact:
TEL: +81-6-6321-7007
FAX: +81-6-6321-8400
E-mail: ir@santen.co.jp

Established 1890

Paid-in Capital ¥6,247 million

Number of Shareholders 8,509

Stock Exchange Listings Tokyo and Osaka

Ticker Code 4536

Transfer Agent UFJ Trust Bank Limited
6-3, Fushimicho 3-chome,
Chuo-ku Osaka 541-8502, Japan
TEL: +81-6-6229-3011

Major Offices Sendai, Tokyo, Saitama, Nagoya,
Osaka, Hiroshima and Fukuoka

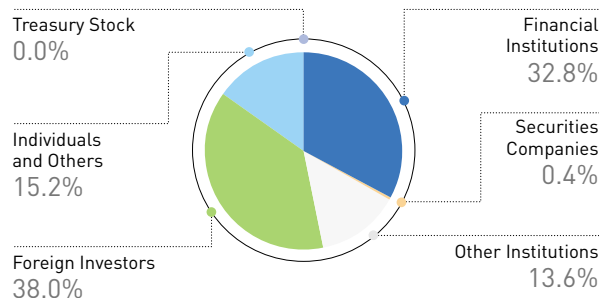
Manufacturing Plants Noto, Shiga and Osaka

Research Laboratory Nara Research and Development
Center

Number of Employees 2,308 (non-consolidated: 1,691)

Number of Shares Issued 86,658,703

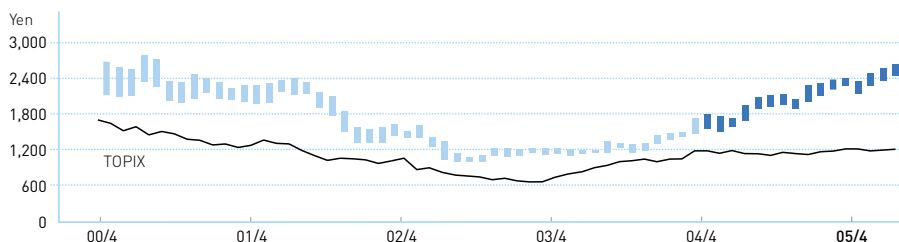
Distribution of Shareholders by Number of Shares Held



Major Shareholders

Shareholders	Thousands of Shares	Percentage of Total Voting Rights
Northern Trust Company		
AVFC Sub-account American Clients	7,198	8.3%
Mita Sangyo Co., Ltd.	4,756	5.5
Japan Trustee Service Bank, Ltd.	4,577	5.3
The Master Trust Bank of Japan, Ltd.	4,565	5.3
Nippon Life Insurance Company	2,856	3.3
Northern Trust Company		
AVFC Re U.S. Tax Exempted Pension Funds	2,854	3.3
Tokio Marine & Nichido Fire Insurance Co., Ltd.	2,668	3.1
Trust & Custody Services Bank, Ltd.	2,442	2.8
UFJ Bank Limited	2,148	2.5
The Bank of Tokyo-Mitsubishi, Ltd.	2,148	2.5

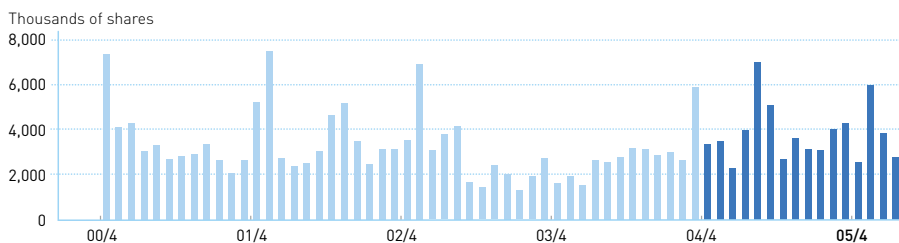
Stock Price Range Osaka Securities Exchange (monthly basis)



* Stock price data shows values after adjustment for share splits.

* TOPIX: Tokyo stock price index

Trading Volume Osaka Securities Exchange (monthly basis)



Yearly High and Low Prices

	2001	2002	2003	2004	2005
High (yen)	2,410	1,635	1,435	2,240	2,635
Low (yen)	1,330	990	1,099	1,362	2,050

Note: Calendar years. Stock prices for 2005 are for the period to the end of July.