

Corporate Information/Stock Information

As of March 31, 2006

Corporate Headquarters Santen Pharmaceutical Co., Ltd.
9-19, Shimoshinjo 3-chome,
Higashiyodogawa-ku,
Osaka 533-0021, Japan
URL: <http://www.santen.co.jp>
Investor relations contact:
TEL: +81-6-6321-7007
FAX: +81-6-6321-8400
E-mail: ir@santen.co.jp

Established 1890

Paid-in Capital ¥6,319 million

Number of Shareholders 13,557

Stock Exchange Listings Tokyo and Osaka

Ticker Code 4536

Transfer Agent Mitsubishi UFJ Trust and Banking Corporation
6-3, Fushimicho 3-chome,
Chuo-ku, Osaka 541-8502, Japan

Major Offices Sendai, Tokyo, Saitama, Nagoya,
Osaka, Hiroshima and Fukuoka

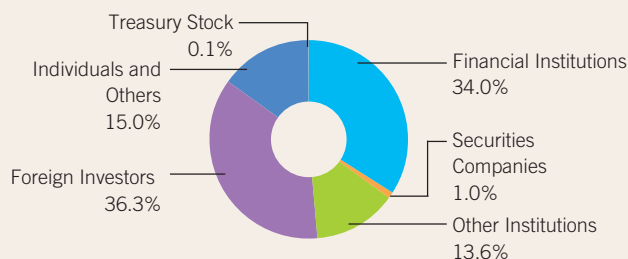
Manufacturing Plants Noto, Shiga and Osaka

Research Laboratory Nara Research and Development Center

Number of Employees 2,312 (non-consolidated: 1,695)

Number of Shares Issued 86,751,203

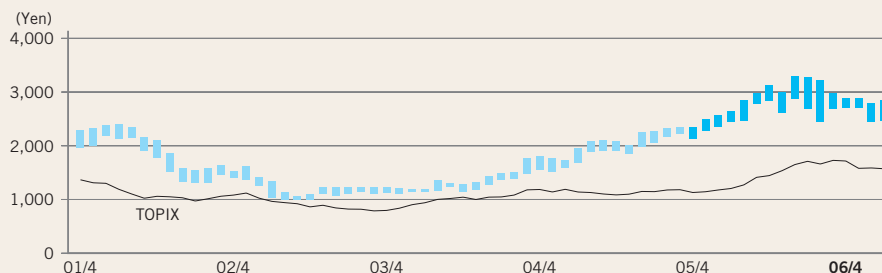
Distribution of Shareholders by Number of Shares Held



Major Shareholders (Leading 10 by number of shares held)

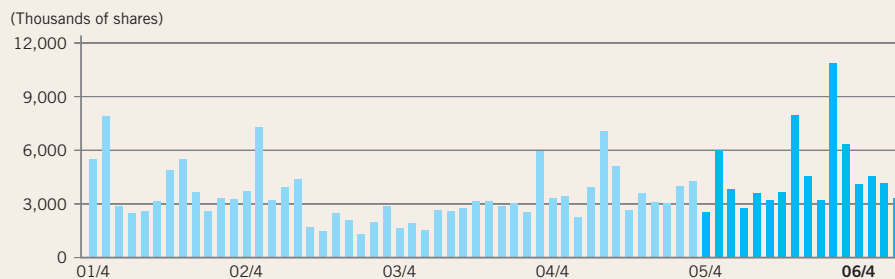
Shareholders	Thousands of Shares	Percentage of Total Voting Rights
Northern Trust Company AVFC Sub-account American Clients	8,030	9.3%
Japan Trustee Services Bank, Ltd.	4,912	5.7
Mita Sangyo Co., Ltd.	4,756	5.5
The Bank of Tokyo-Mitsubishi UFJ, Ltd.	4,296	5.0
The Master Trust Bank of Japan, Ltd.	3,922	4.5
Trust & Custody Services Bank, Ltd.	2,750	3.2
Tokio Marine & Nichido Fire Insurance Co., Ltd.	2,668	3.1
Nippon Life Insurance Company	2,661	3.1
Mitsubishi UFJ Trust and Banking Corporation	1,930	2.2
Investors Bank & Trust Company	1,718	2.0

Stock Price Range Osaka Securities Exchange (monthly basis)



*TOPIX: Tokyo stock price index

Trading Volume Osaka Securities Exchange (monthly basis)



Yearly High and Low Prices

	2002	2003	2004	2005	2006
High (yen)	1,635	1,435	2,240	3,290	3,280
Low (yen)	990	1,099	1,362	2,050	2,440

Note: Calendar years. Stock prices for 2005 are for the period to the end of July.