

Corporate Information/Stock Information

As of March 31, 2007

Corporate Headquarters Santen Pharmaceutical Co., Ltd.
 9-19, Shimoshinjo 3-chome,
 Higashiyodogawa-ku,
 Osaka 533-0021, Japan
 URL: <http://www.santen.com>
 Investor relations contact:
 TEL: +81-6-6321-7007
 FAX: +81-6-6321-8400
 E-mail: ir@santen.co.jp

Established 1890

Paid-in Capital ¥6,382 million

Number of Shareholders 10,016

Stock Exchange Listings Tokyo and Osaka

Ticker Code 4536

Transfer Agent Mitsubishi UFJ Trust and Banking Corporation
 6-3, Fushimicho 3-chome,
 Chuo-ku, Osaka 541-8502, Japan

Major Offices Sendai, Tokyo, Saitama, Nagoya, Osaka,
 Hiroshima and Fukuoka

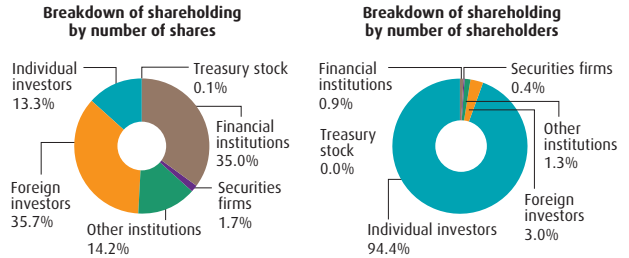
Manufacturing Plants Noto, Shiga and Osaka

Research Laboratory Nara Research and Development Center

Number of Employees 2,409 (non-consolidated: 1,695)

Number of Shares Issued 86,825,303

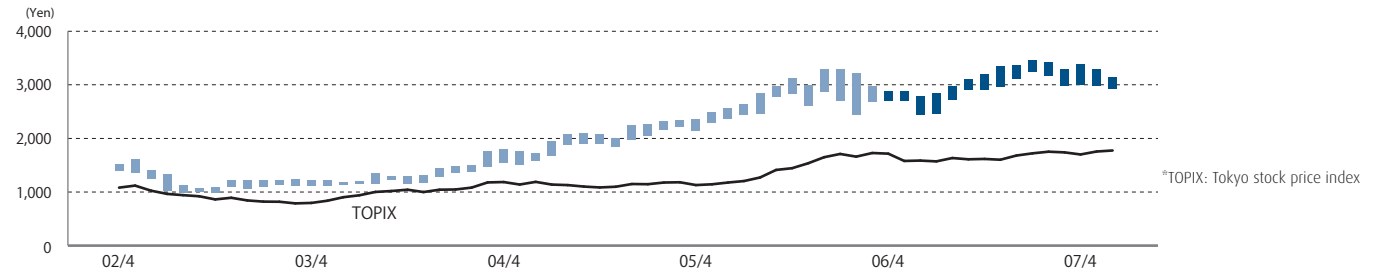
Breakdown of Shareholding



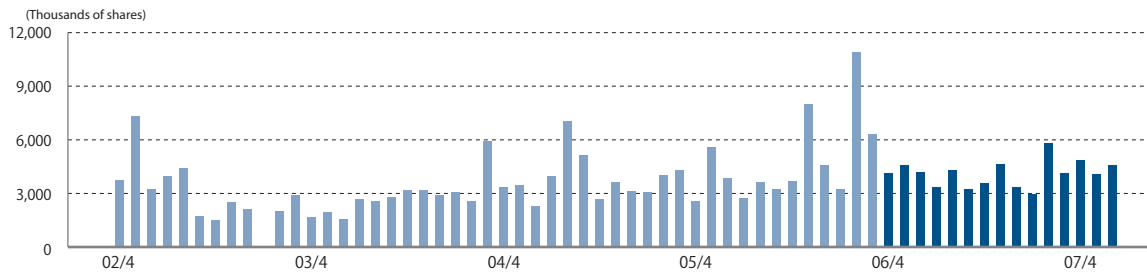
Major shareholders

Name	Number of shares held	Percentage of investment
Japan Trustee Service Bank, Ltd.	6,335 Thousand shares	7.3 %
Northern Trust CO. (AVFC)		
Sub-account American Clients	5,660	6.5
Mita Sangyo Co., Ltd.	4,756	5.5
The Bank of Tokyo-Mitsubishi UFJ, Ltd.	4,296	5.0
Japan Master Trust and Banking Co., Ltd.	3,824	4.4
Nippon Life Insurance Company	2,961	3.4
The Tokio Marine and Nichido Fire Insurance Co., Ltd.	2,668	3.1
Trust and Custody Services Bank, Ltd.	2,360	2.7
Northern Trust CO. AVFC		
Re U.S. Tax Exempted Pension Funds	2,321	2.7
Mitsubishi UFJ Trust and Banking Corporation	1,924	2.2

Stock Price Range Osaka Securities Exchange (monthly basis)



Trading Volume Osaka Securities Exchange (monthly basis)



Yearly High and Low Prices

	2003	2004	2005	2006	2007
High (yen)	1,435	2,240	3,290	3,370	3,450
Low (yen)	1,099	1,362	2,050	2,440	2,925

Note: Calendar years. Stock prices for 2007 are for the period to the end of June