

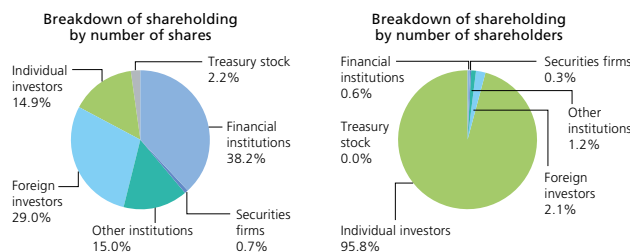
Corporate Information/Stock Information

As of March 31, 2008

Corporate Headquarters Santen Pharmaceutical Co., Ltd.
 9-19, Shimoshinjo 3-chome,
 Higashiyodogawa-ku,
 Osaka 533-8651, Japan
 URL: <http://www.santen.com>
 Investor relations contact:
 TEL: +81-6-6321-7007
 FAX: +81-6-6321-8400
 E-MAIL: ir@santen.co.jp

Established 1890
Paid-in Capital ¥6,419 million
Number of Shareholders 13,113
Stock Exchange Listings Tokyo and Osaka
Ticker Code 4536
Transfer Agent Mitsubishi UFJ Trust and Banking Corporation
 1-5, Dojimahama 1-chome, Kita-ku,
 Osaka 530-0004, Japan
Major Offices Sendai, Tokyo, Saitama, Nagoya, Osaka,
 Hiroshima and Fukuoka
Manufacturing Plants Noto, Shiga and Osaka
Research Laboratory Nara Research and Development Center
Number of Employees 2,483 (nonconsolidated: 1,847)
Number of Shares Issued 86,866,703

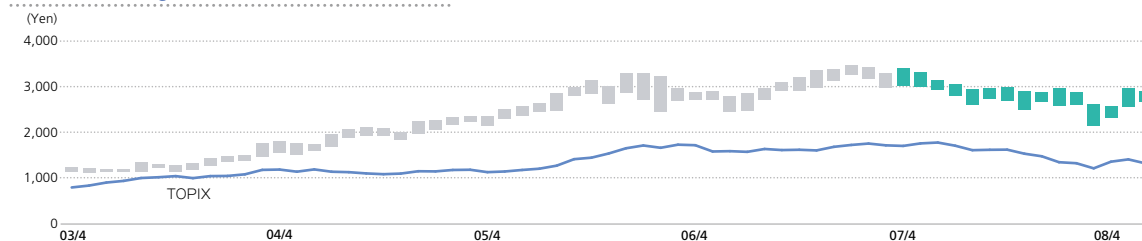
Breakdown of Shareholding



Major Shareholders

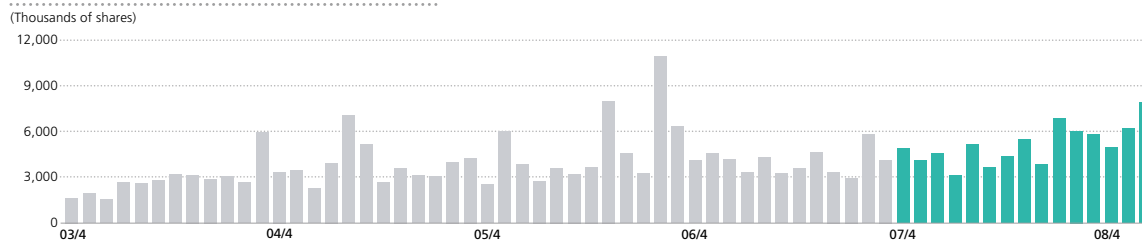
Name	Number of shares held	Percentage of investment
Japan Trustee Service Bank, Ltd.	7,027 <small>Thousand of shares</small>	8.1%
Mita Sangyo Co., Ltd.	4,756	5.5
The Master Trust Bank of Japan, Ltd.	4,420	5.1
The Bank of Tokyo-Mitsubishi UFJ, Ltd.	4,241	4.9
Northern Trust CO. (AVFC) Sub-account American Clients	3,972	4.6
Nippon Life Insurance Company	3,151	3.6
Trust and Custody Services Bank, Ltd.	3,002	3.5
The Silchester International Investors International Value Equity Trust	2,736	3.1
Tokio Marine and Nichido Fire Insurance Co., Ltd.	2,668	3.1
Mitsubishi UFJ Trust and Banking Corporation	1,907	2.2

Stock Price Range Osaka Securities Exchange (monthly basis)



* TOPIX: Tokyo stock price index

Trading Volume Osaka Securities Exchange (monthly basis)



Yearly High and Low Prices

	2004	2005	2006	2007	2008
High (yen)	¥2,240	¥3,290	¥3,370	¥3,450	¥2,990
Low (yen)	1,362	2,050	2,440	2,925	2,140

Note: Calendar years. Stock prices for 2008 are for the period to the end of June