

Corporate Information / Stock Information

As of March 31, 2009

Corporate Headquarters Santen Pharmaceutical Co., Ltd.
9-19, Shimoshinjo 3-chome,
Higashiyodogawa-ku, Osaka 533-8651, Japan
URL: <http://www.santen.com>
Investor relations contact:
TEL: +81-6-6321-7007
FAX: +81-6-6321-8400
E-MAIL: ir@santen.co.jp

Established 1890

Paid-in Capital ¥6,457 million

Number of Shareholders 11,180

Stock Exchange Listings Tokyo and Osaka

Ticker Code 4536

Transfer Agent Mitsubishi UFJ Trust and Banking Corporation
1-5, Dojimahama 1-chome, Kita-ku,
Osaka 530-0004, Japan

Major Offices Sendai, Tokyo, Saitama, Nagoya,
Osaka, Hiroshima and Fukuoka

Manufacturing Plants Noto, Shiga and Osaka

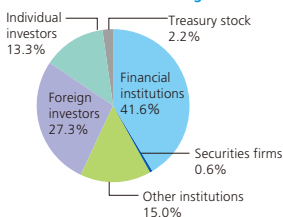
Research Laboratory Nara Research and Development Center

Number of Employees 2,690 (nonconsolidated: 1,908)

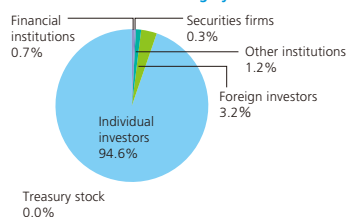
Number of Shares Issued 86,916,203

Breakdown of Shareholding

Breakdown of shareholding



Breakdown of shareholding by number of shares



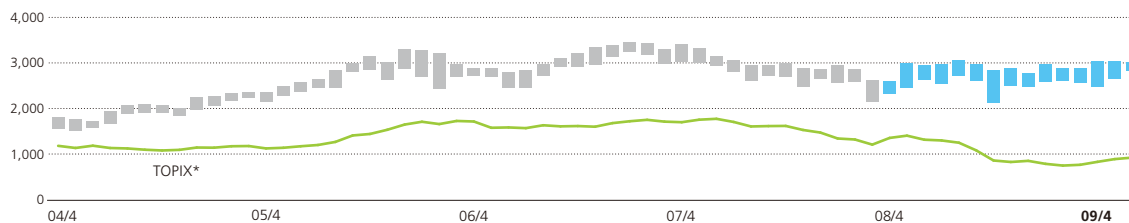
Major Shareholders

Name	Number of shares held	Percentage of investment
Japan Trustee Service Bank, Ltd.	12,388 ^{Thousands of shares}	14.3%
The Master Trust Bank of Japan, Ltd.	6,308	7.3
Mita Sangyo Co., Ltd.	4,756	5.5
The Bank of Tokyo-Mitsubishi UFJ, Ltd.	4,241	4.9
Nippon Life Insurance Company	3,017	3.5
Tokio Marine and Nichido Fire Insurance Co., Ltd.	2,668	3.1
Trust and Custody Services Bank, Ltd.	2,057	2.4
RBC Dexia Investor Services, London-lending account	1,905	2.2
DAIICHI SANKYO COMPANY, LIMITED	1,642	1.9
ONO PHARMACEUTICAL CO., LTD.	1,630	1.9

Note: Santen Pharmaceutical Co., Ltd. holds treasury stock (1,893 thousand shares), but is excluded from the major shareholders.

Stock Price Range Yen

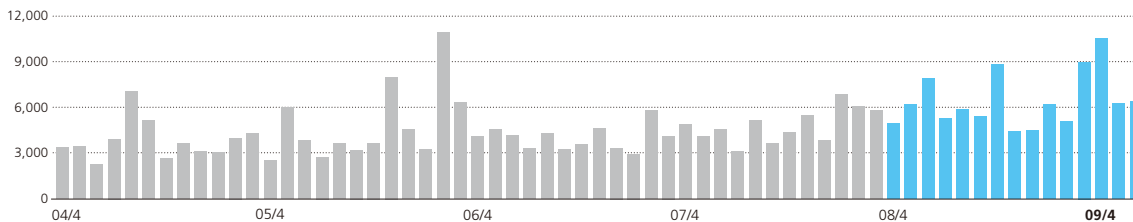
Osaka Securities Exchange (monthly basis)



* TOPIX: Tokyo stock price index

Trading Volume Thousands of shares

Osaka Securities Exchange (monthly basis)



Yearly High and Low Prices

	2005	2006	2007	2008	2009
High (yen)	3,290	3,370	3,450	3,050	3,040
Low (yen)	2,050	2,440	2,480	2,125	2,460

Note: Calendar years. Stock prices for 2009 are for the period to the end of June.